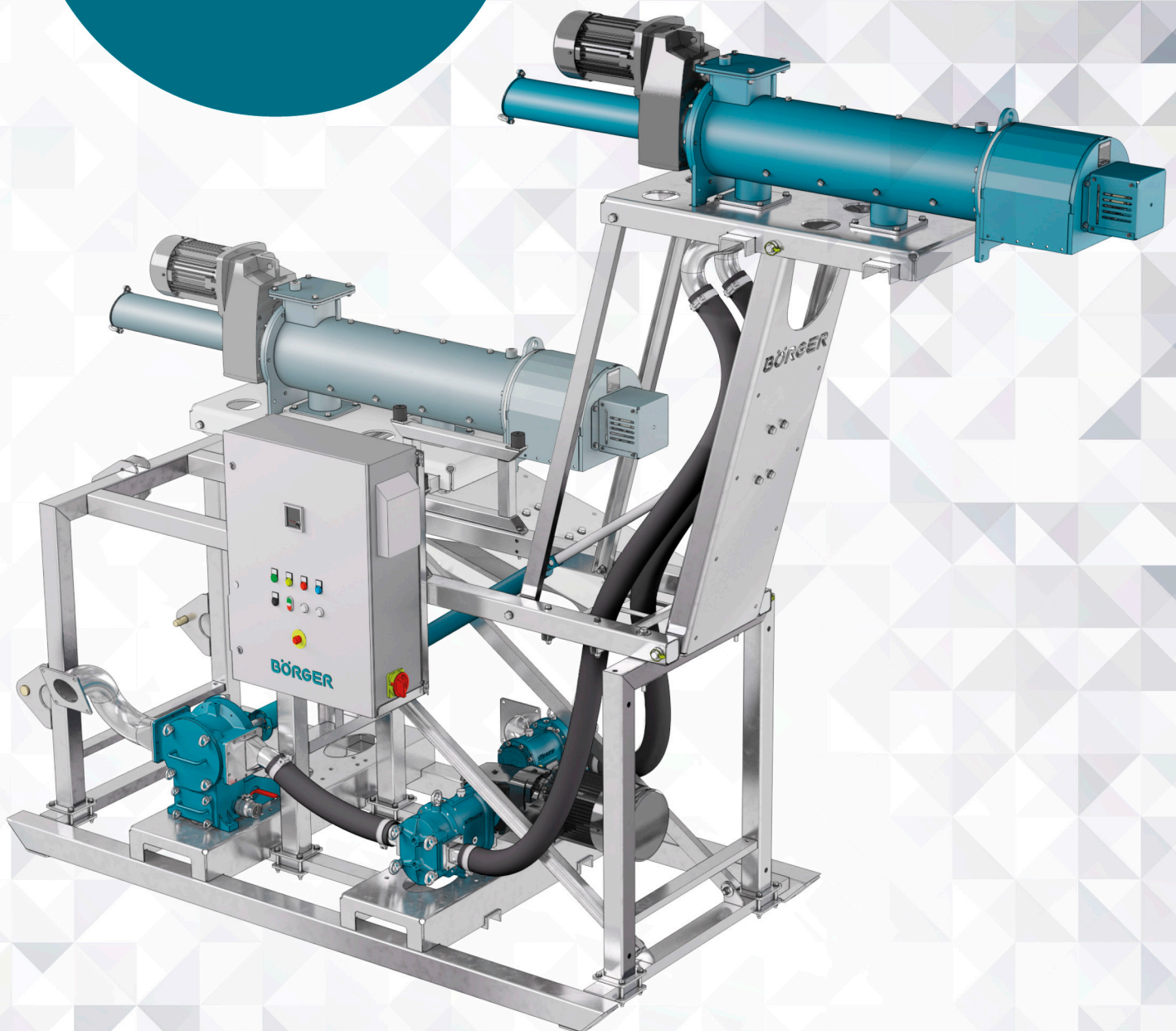


**BIOSELECT  
POWERFRAME**



# RIGID OR EXTENDABLE

## THE POWERFRAME VERSIONS

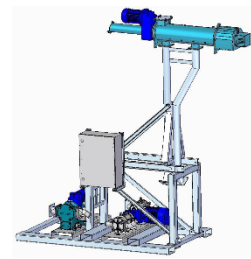
The Bioselect RC 25 is available with different frame versions, which are configured for you using a modular principle. We produce the unit exactly tailored to your needs – from the frame and the pump and macerating technology right up to the control technology.

### THE SEPARATOR

1 Bioselect RC 25 (max. capacity: 25 m³/h)

### THE FRAME

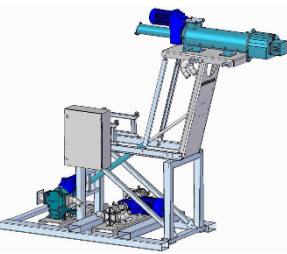
Version 1: rigid frame



2 + 3b

Discharge height: 3.60 m  
Weight: approx. 1,25 t

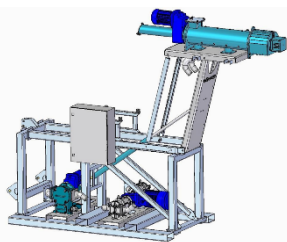
Version 2: extendable Powerframe



2 + 3a

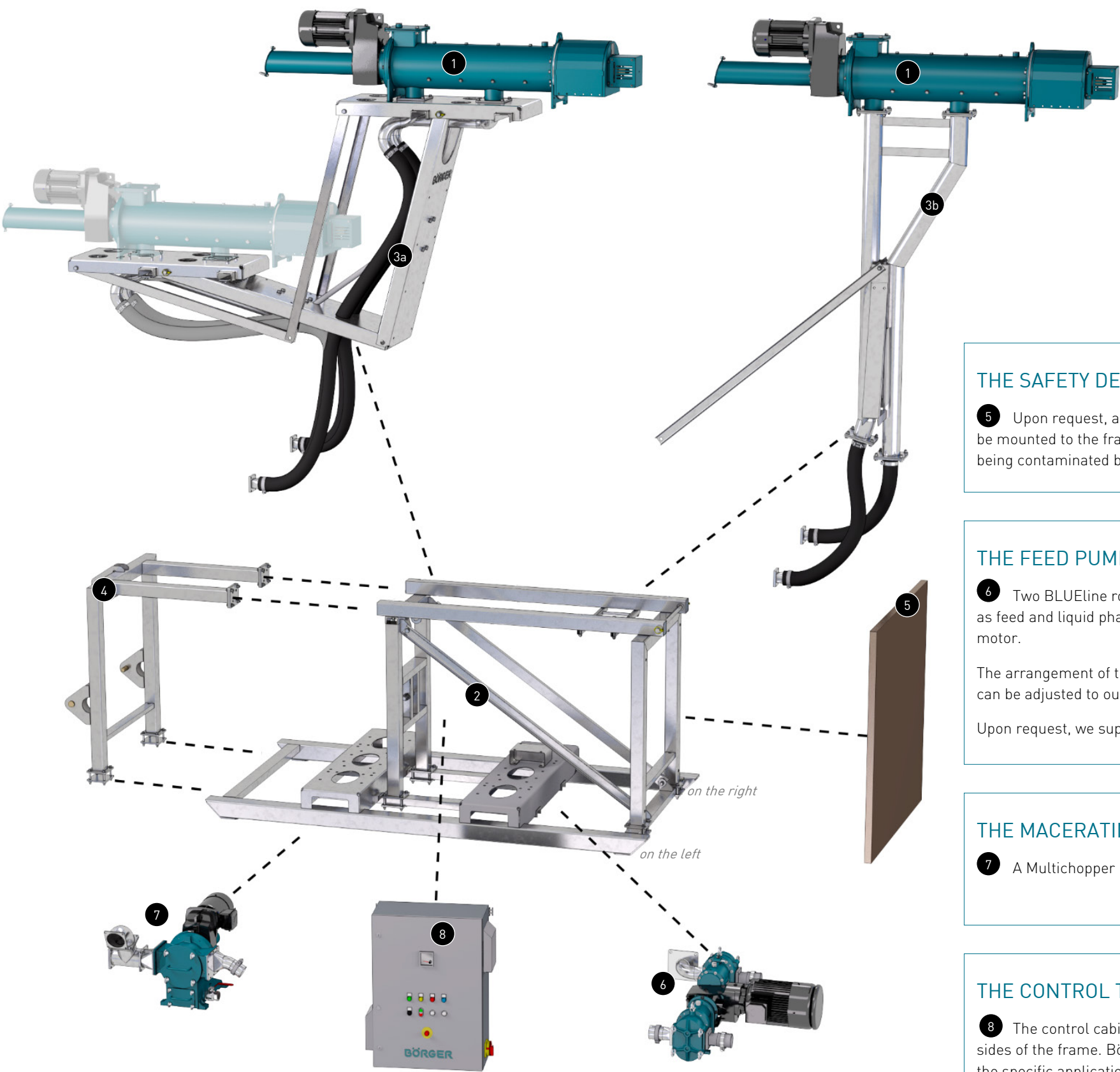
Discharge height: 3.65 m  
Transportation height: 2.50 m  
Weight: approx. 1.3 t

Version 3: extendable Powerframe with 3-point hitch frame



2 + 3a + 4

Discharge height: 3.65 m  
Transportation height: 2.50 m  
Weight: approx. 1.4 t



### THE SAFETY DEVICE

5 Upon request, a cut to size resin-coated plywood board can be mounted to the frame. The board protects the frame from being contaminated by the conical pile.

### THE FEED PUMP AND THE LIQUID PHASE PUMP

6 Two BLUEline rotary lobe pumps of the AN series are applied as feed and liquid phase pumps. Both pumps are driven by one motor.

The arrangement of the pumps on the Powerframe is flexible and can be adjusted to our customer's requests.

Upon request, we supply the Powerframe with only one pump.

### THE MACERATING TECHNOLOGY

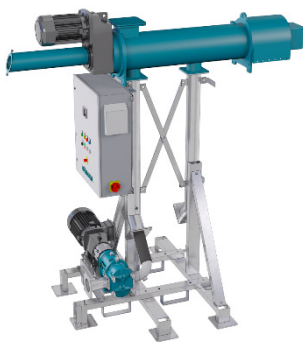
7 A Multichopper P150 can be attached to the Bioselect frame.

### THE CONTROL TECHNOLOGY

8 The control cabinet can be installed at one of the two long sides of the frame. Börger control technology is programmed for the specific application and thus ensures an optimum load of the separator at all times.

## UNLIMITED POSSIBILITIES FURTHER SET-UP OPTIONS

BASE FRAME WITH FEED PUMP



Abwurfhöhe: 1,80 m

BASE FRAME WITH FEED PUMP  
AND LIQUID PHASE PUMP



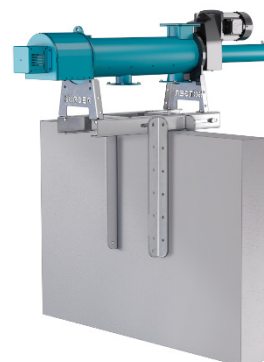
Abwurfhöhe: 1,80 m

BASE FRAME WITH FEED PUMP  
AND MULTICHOPPER



Abwurfhöhe: 1,80 m

BIOSELECT ON A WALL BRACKET



Abwurfhöhe: abhängig von der Mauerhöhe